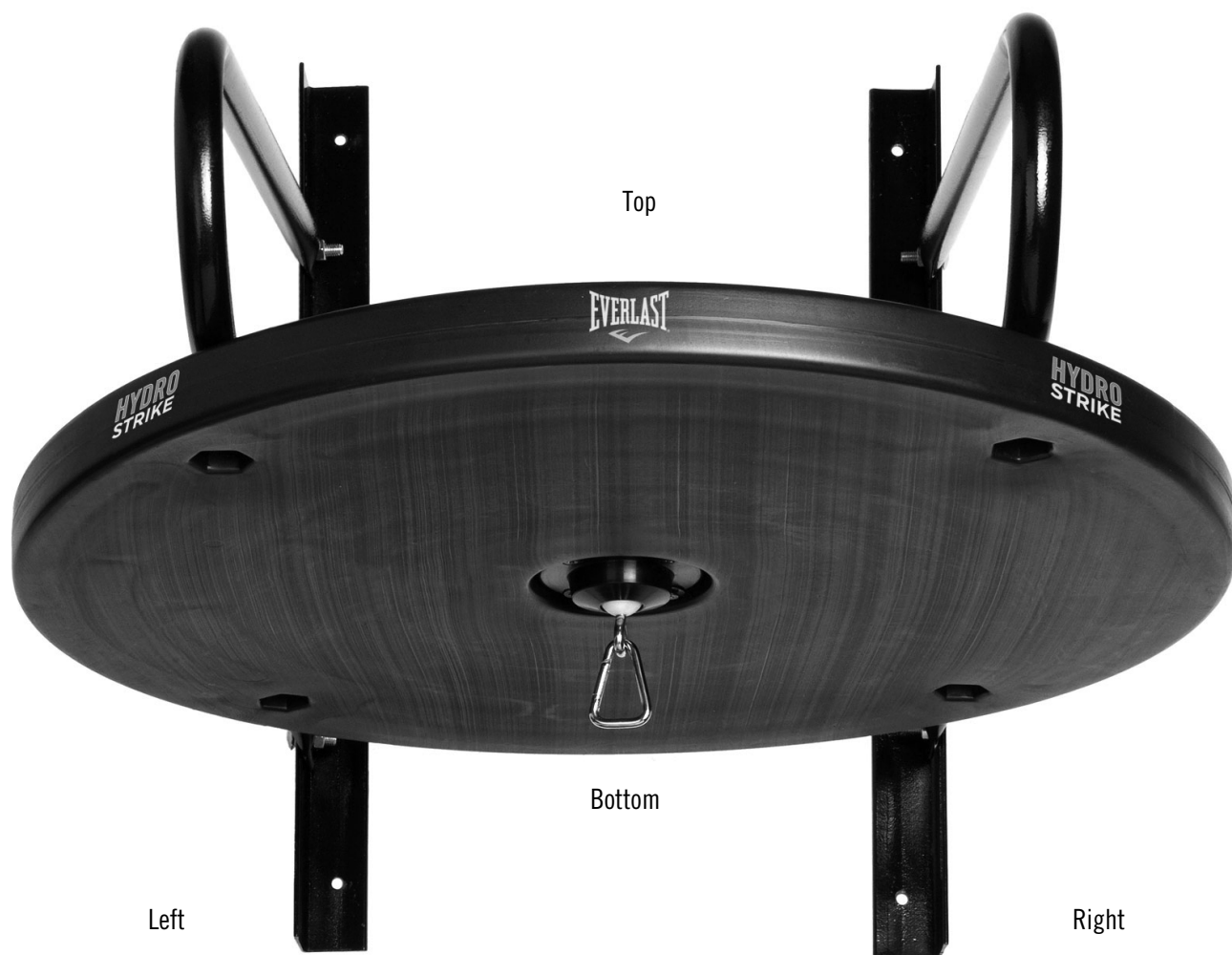




4251 HYDROSTRIKE SPEED BAG PLATFORM OWNER'S MANUAL



Front View

G R E A T N E S S I S W I T H I N™

UNIT ASSEMBLY TOOLS INCLUDED
WALL MOUNT HARDWARE AND TOOLS NOT INCLUDED

Everlast Worldwide, 1900 Hwy DD, Moberly, MO 65270
Customer Service 800.821.7930
081412

C3



4251 HYDROSTRIKE SPEED BAG PLATFORM OWNER'S MANUAL

CONGRATULATIONS! YOU HAVE JUST PURCHASED THE EVERLAST HYDROSTRIKE SPEED BAG PLATFORM.
PLEASE READ OVER THE INSTRUCTIONS CAREFULLY PRIOR TO ASSEMBLY.

Prior to Assembly:

These instructions cover the 4251, 4251KIT, etc... speed bag platform assembly.

It is important that you follow the instructions carefully. Construction should take around 30 minutes to complete.

Place the EVERLAST Hydrostrike Speed Bag Platform at your desired location.

Remove all components from the box, and make sure all the parts are present.

Two people are recommended for assembly.

Find a spacious area for assembly and use. We recommend an area at least 4ft. x 6ft.

It is strongly recommended that handwraps or other hand protection is worn while using this speed bag platform.

Wall mount hardware and tools not included. Unit assembly tools included.

Tighten the assembly bolts by hand (unless stated otherwise) until all are in place, and then tighten the bolts with a wrench when assembly is completed.

Be sure that all bolts and nuts are aligned properly before tightening them. When installation is complete, make sure all parts are snug and that the platform is properly erected and ready for use.

If at any time you find any part is worn or defective, cease use of the platform and contact EVERLAST to provide you with any necessary replacement parts for a nominal fee.

WARNING: Failure to follow instructions herein may cause serious injury. Boxing is an invigorating yet strenuous activity. Before starting any workout routine, consult your physician.

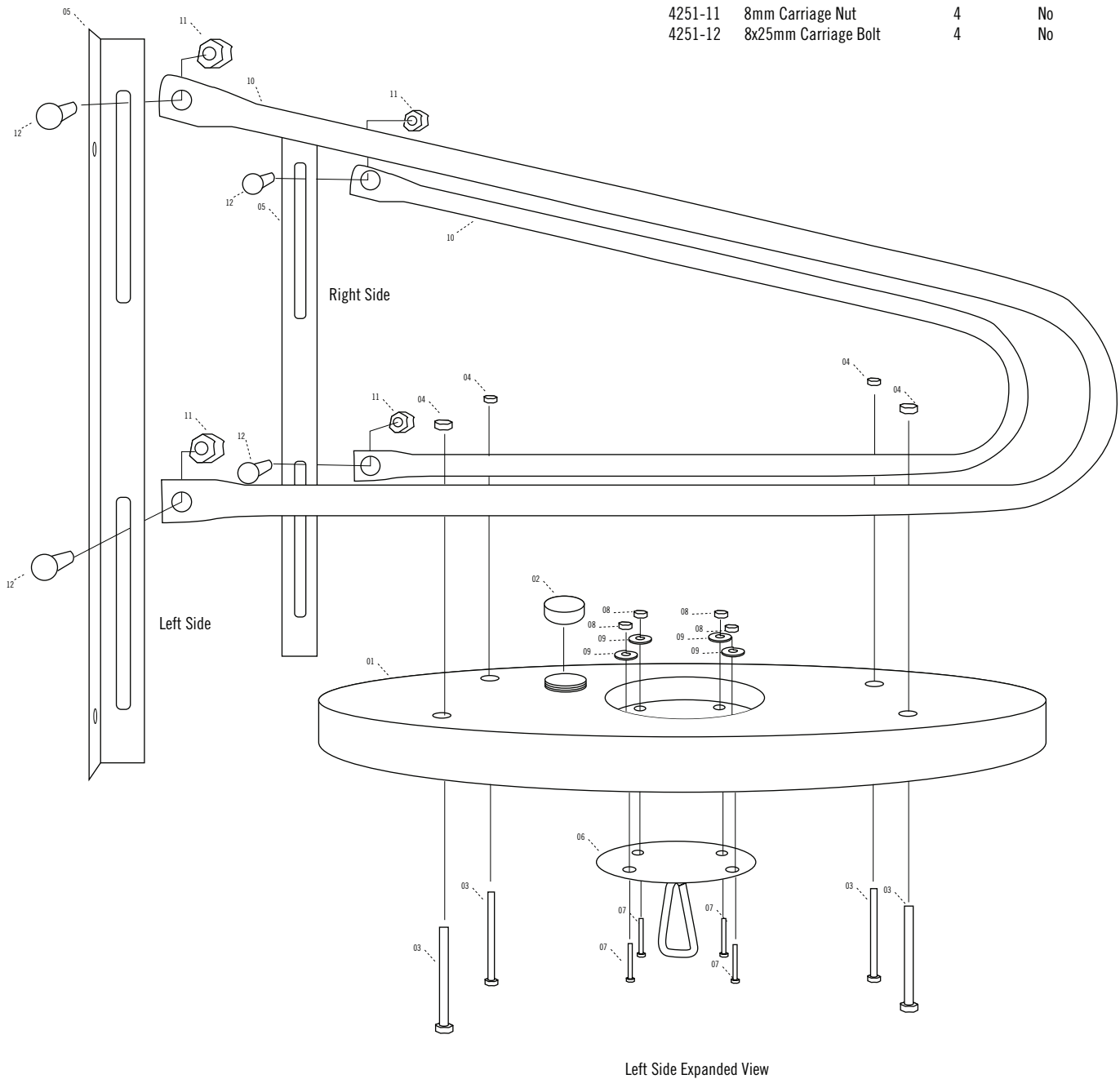
Before each use, please inspect to make sure that the platform is in good working order and that all bolts are tightened, and verify that the speed bag is hanging from the platform correctly.

As with any sport, the participant is subject to a certain amount of risk. Boxing, by its very nature, contains an element of risk of injury for which the EVERLAST user must be responsible.

The EVERLAST Hydrostrike Speed Bag Platform is not a toy. Please do not allow children to use it without adult supervision. Similarly, before allowing people unfamiliar with the speed bag to use it, instruct them on the basics. The user must accept full responsibility for the safe and proper assembly and use of all equipment.

4251 HYDROSTRIKE SPEED BAG PLATFORM EXPLODED DRAWING/PARTS LIST

No.	Description	Qty.	Pre.- Assembled
4251-1	Hydrostrike Platform	1	No
4251-2	Water Cap	1	Yes
4251-3	6x50mm Carriage Bolt	4	No
4251-4	6mm Carriage Nut	4	No
4251-5	Platform Mount	2	No
4251-6	Swivel	1	Yes
4251-7	6x20mm Screw	4	No
4251-8	6mm Nut	4	No
4251-9	Lock Washers	4	No
4251-10	Platform Arms	2	No
4251-11	8mm Carriage Nut	4	No
4251-12	8x25mm Carriage Bolt	4	No



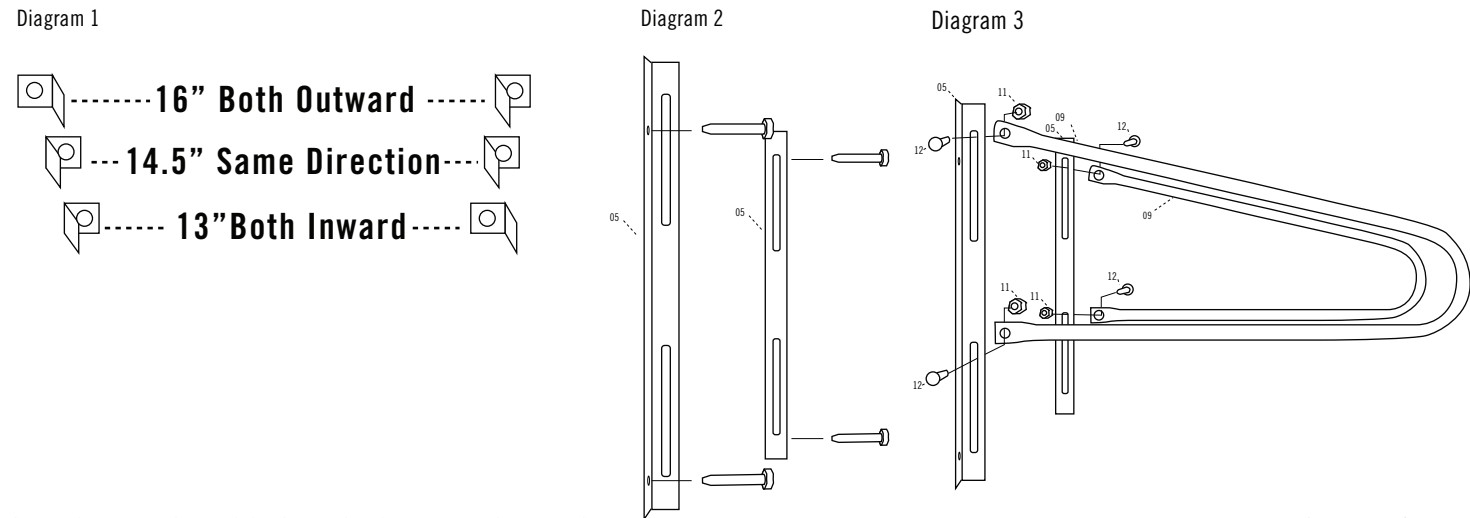
Assembly For EVERLAST Hydrostrike Speed Bag Platform
Model #4251

STEP 1: BRACKETS AND WALL MOUNTING

- Sub Step 1. Determine the mounting height and distance from adjacent walls desired. Average mounting height is 7 1/2'. A rough rule of thumb is, the bottom of the bag you intend to use should be level with users chin. Be sure the selected location coincides with wood studs if mounting to a wood stud wall. Unit is designed for use with studs on 16", 14.5" or 13" centers. See Diagram 1
- Sub Step 2. If Mounting to a wood stud wall (with 16" on center spacing), locate a stud where you would like the right side of your unit to be, place the Right Platform Mount (05) at the height you have selected and attach the Right Platform Mount (05) to the wall using 5/16" wood screws for wood wall studs. Use masonry anchors for masonry walls. Mounting Hardware not provided. See Diagram 2
- Sub Step 3. Exactly 16" to the left and at the same height attach Left Platform Mount (10) to the wall using 5/16" wood screws for wood wall studs. Use masonry anchors for masonry walls. Mounting Hardware not provided. See Diagram 2
- Sub Step 4. Attach Platform arms (10) to Mounts (05) at same height using four (8x25mm) carriage bolts and nuts (11,12). Bolts face in toward center with square necks fitting through slots in platform mounts (05). See Diagram 3

Items needed for step 1:

No.	Description	Qty.
4251-5	Platform Mount	2
4251-10	Top Arm Supports	2
4251-11	8mm Carriage Nut	4
4251-12	8x25mm Carriage Bolt	4

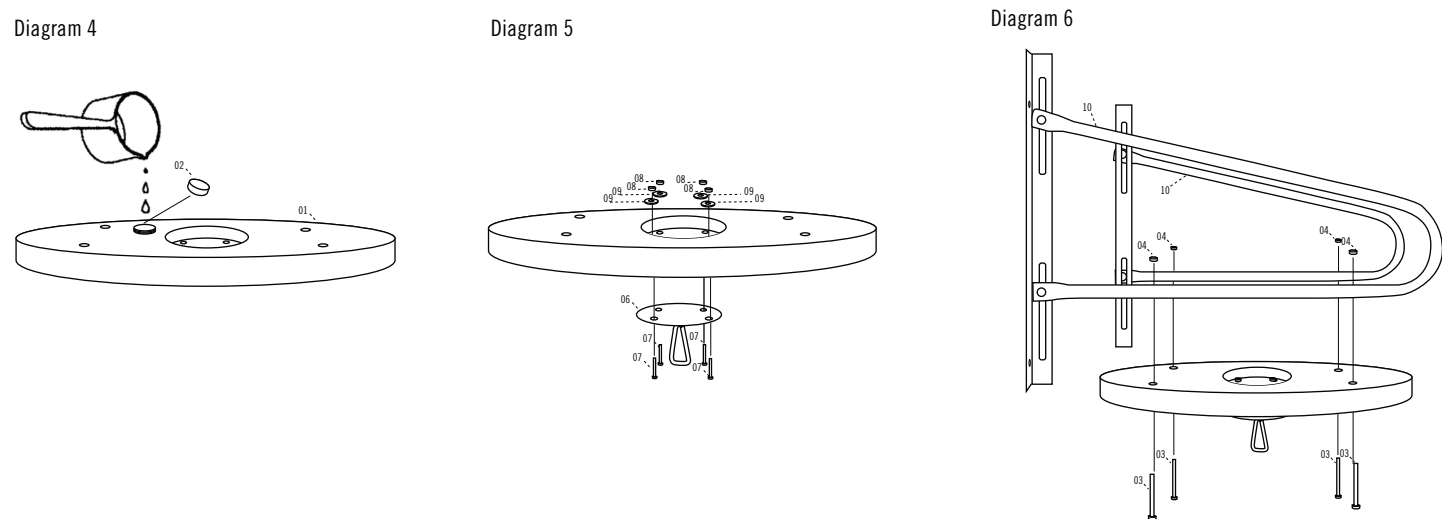


STEP 2: PLATFORM CONSTRUCTION AND MOUNTING

- Sub Step 1. Fill Platform (01) with water as shown in Diagram 4
- Sub Step 2. Attach Swivel (06) to the Drum (01) using Four (6x20mm) screws, lock washers and nuts (07, 08, 09) provided. See Diagram 5
- Sub Step 3. Align drum w/Logos facing away from wall. Attach Drum (01) to both Platform Arms (10) using four (6x50mm) carriage bolts, lock washers and nuts (03, 04), bolts go up through the drum (01) with the nuts at the Platform Mounts (10). See Diagram 6
- Sub Step 4. Make certain all lag bolts or anchor bolts, and all assembly nuts and screws are securely tightened. The unit is ready to have a speed bag mounted and used.

Items needed for step 1:

No.	Description	Qty.
4251-1	Hydrostrike Platform	1
4251-2	Water Cap	1
4251-3	6x50mm Carriage Bolt	4
4251-4	6mm Carriage Nut	4
4251-10	Top Arm Supports	2
4251-6	Swivel	1
4251-7	6x20mm Screw	4
4251-8	6mm Nut	4
4251-9	Lock Washers	4



* FAILURE TO FOLLOW INSTRUCTIONS MAY BE CAUSE FOR SERIOUS INJURY. YOU ARE RESPONSIBLE FOR PROPER ASSEMBLY, USERS OF THIS PRODUCT MUST ASSUME ALL RISK OF INJURY.

G R E A T N E S S I S W I T H I N TM